

# sni *em* ar

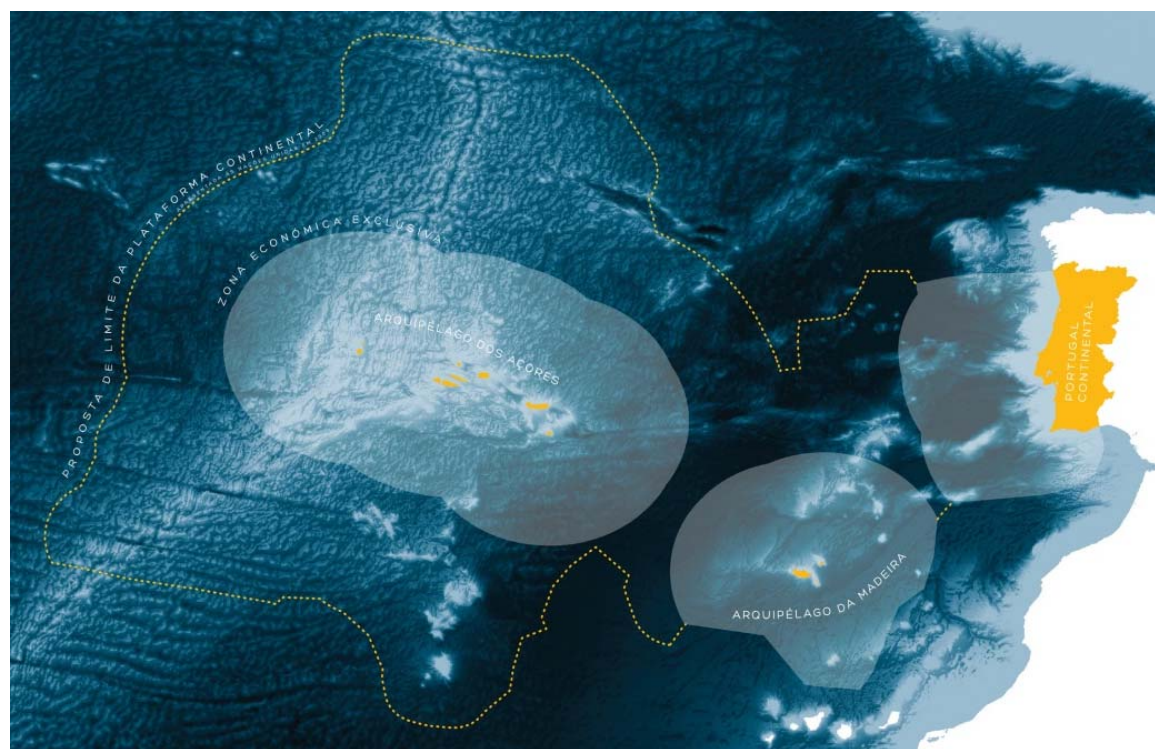
Sistema Nacional de Informação do Mar

Preparation of integrated geographic  
information for marine and coastal  
water management

Teresa Rafael

29<sup>th</sup> September 2016

1. The project
2. Status report
3. Outcomes



## EEA Grants Pre-defined project:

Preparation of integrated geographic information for marine and coastal water management (<http://www.eeagrants.gov.pt/>)

## Included in the program:

Integrated management for marine and coastal water

## Framework:

INSPIRE Directive (2007; transposed to national law in 2009)

## Project schedule:

31 months

Start: June 2014

End: December 2016

Budget: 2.35 M€



2 M€



0.35 M€

Promoter:



Donor partners:



National partner:



Programme operator:



Participating entities:



A joint venture of renowned entities

## The problem:

What data on the marine environment exist?

Where are those data?

How can we access those data?

The solution:

a marine geoportal

to increase the capacity of assessing and predicting environmental status in  
marine waters



share



search



access

---

marine information

## Three steps

First:



To identify  
existing  
information

Second:



To catalogue and  
prepare this information

Third:



To display and facilitate  
access to *online*  
information  
(with a friendly search tool)

---

In each local node

---

In each local node  
and in central node

## Policies

- Joint declaration signature
- Conception of the principles for data sharing policies



## Information Technologies

- Conception of IT architecture: open source technologies



## Data & Metadata

- Metadata and data identification in all entities
- Definition of the SNIMar Metadata Profile
- Collaborative keywords: harmonisation of metadata  
<http://collab-keywords.snimar.pt/>
- SNIMar metadata editor
- SNIMar Auto Generator (SAG)



## Local nodes

### Requirements

technology

- open source
- low maintenance costs
- active developers community
- modular

functionality

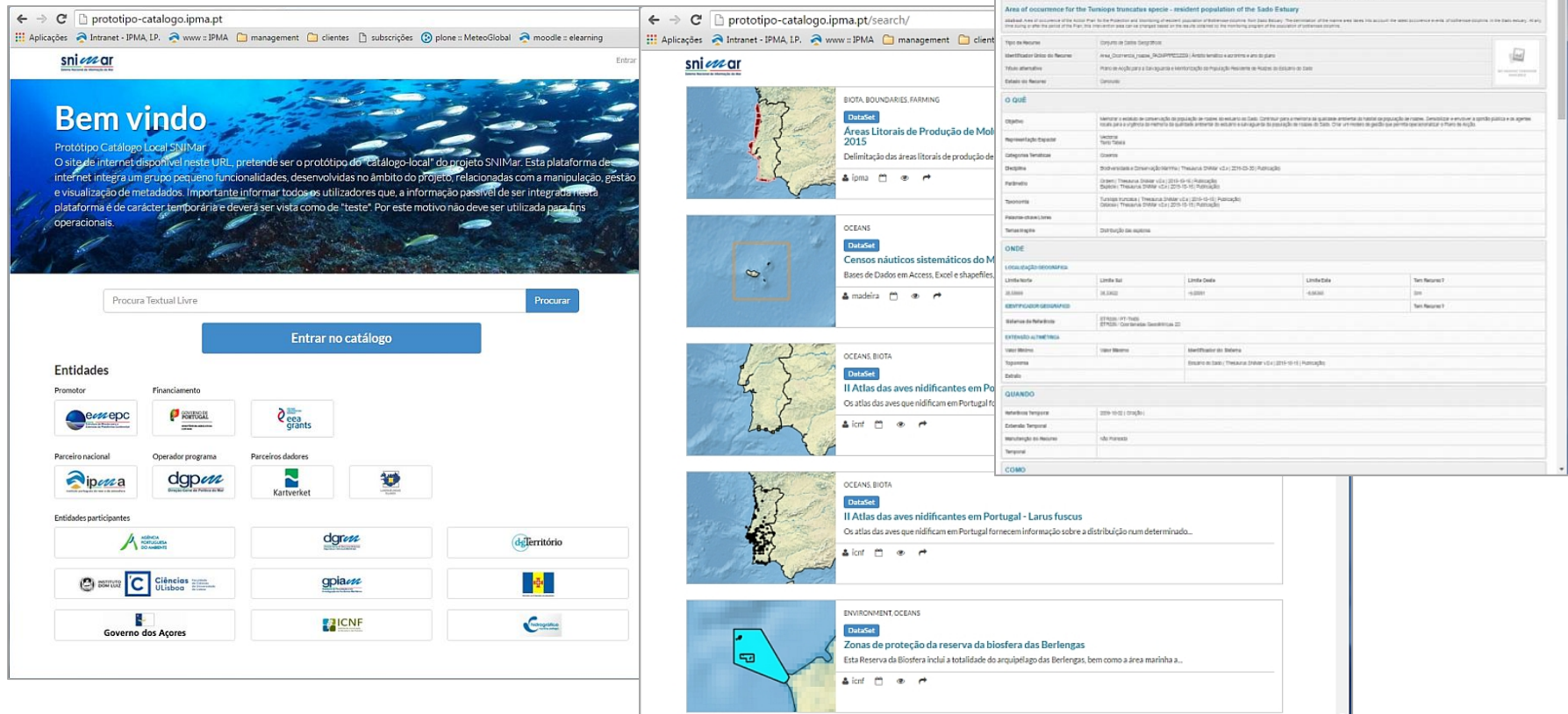
- user friendly interface
- web Interface that allows partner Institution to manage their metadata and data

design

- minimalistic
- simple
- focus on metadata and data management

## Local nodes development, implementation and testing

<http://prototipo-catalogo.ipma.pt>



The image displays two browser windows of the SNI MAR prototype catalog website.

**Left Window (Home Page):** The URL is `prototipo-catalogo.ipma.pt`. It features a "Bem vindo" (Welcome) message and a description of the prototype catalog. Below the text is a search bar with the placeholder "Procura Textual Livre" and a "Procurar" button. A large blue button labeled "Entrar no catálogo" is also visible. The "Entidades" (Entities) section lists various partners and sponsors, including:

- Promotor:** esepc, PORTUGAL, epa grants
- Parceiro nacional:** ipma, dgp
- Operador programa:** dgp
- Parceirosadores:** Kartverket
- Entidades participantes:** Agência Nacional do Ambiente, dgross, dgterritório, Ciências Ulsboe, gpiass, and ICNF.

**Right Window (Search Results):** The URL is `prototipo-catalogo.ipma.pt/search/`. It shows search results for "Áreas Litorais de Produção de Moluscos 2015" and "OCEANS BIOTA II Atlas das aves nidificantes em Portugal". The results include maps, data sets, and detailed information for each entry.

**Top Right Window (Detailed View):** This window shows a detailed view of a data set titled "Área de ocorrência da espécie Tursiops truncatus - população residente do Estuário do Sado". It includes a description, a map, and a table of data points.

Nome	Localização	Limite Oeste	Limite Leste	Limite Norte	Limite Sul	Tem. Recursos 1
Área de ocorrência da espécie Tursiops truncatus - população residente do Estuário do Sado	Estuário do Sado	10.0000	10.0000	38.0000	38.0000	Sim

## Geoportal



- Requirement definition involved the collaborators from all partner Institutions, in order to compile the different expectations regarding the local-catalogue and geoportal
- A reference document was produced and is being used has a guide to the development team

## Geoportal

### Requirements

technology

- open source
- active developers community
- interoperability
- simple backoffice
- user friendly interface
- easy search and discovery
- harvesting integration
- Modular technology

design

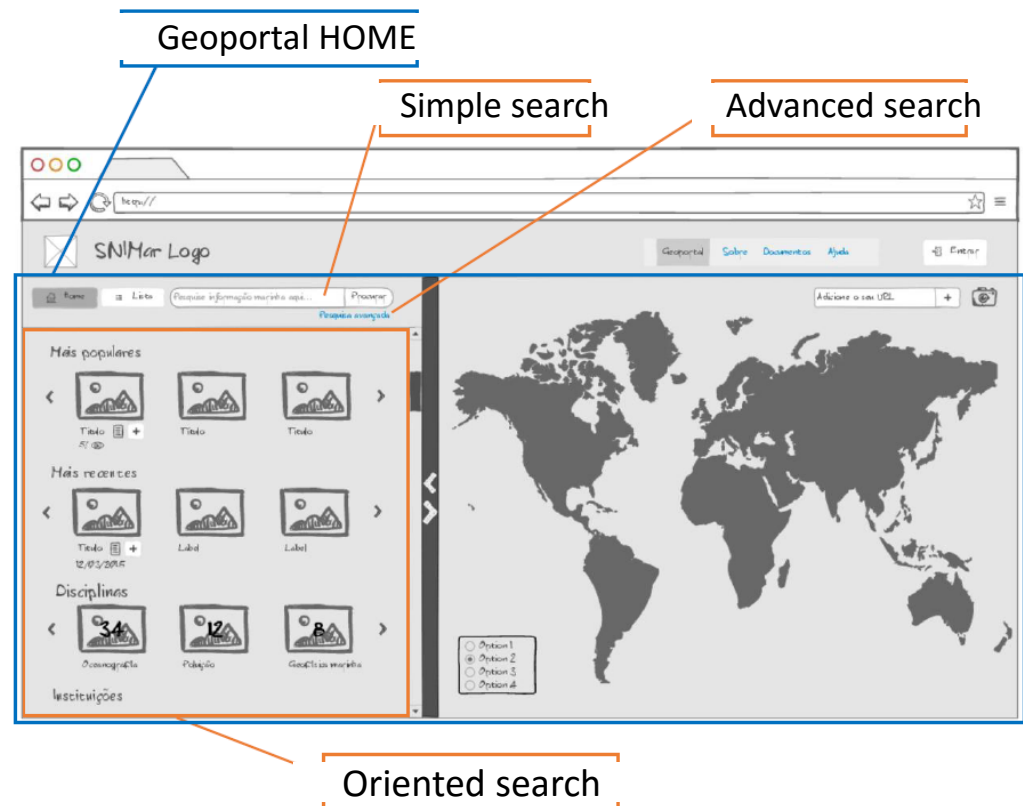
- modern and adaptive
- metadata catalogue base solution
- geographic data representation
- focus on search and discovery
- search adjusted to SNIMar keywords (simple and advanced search)

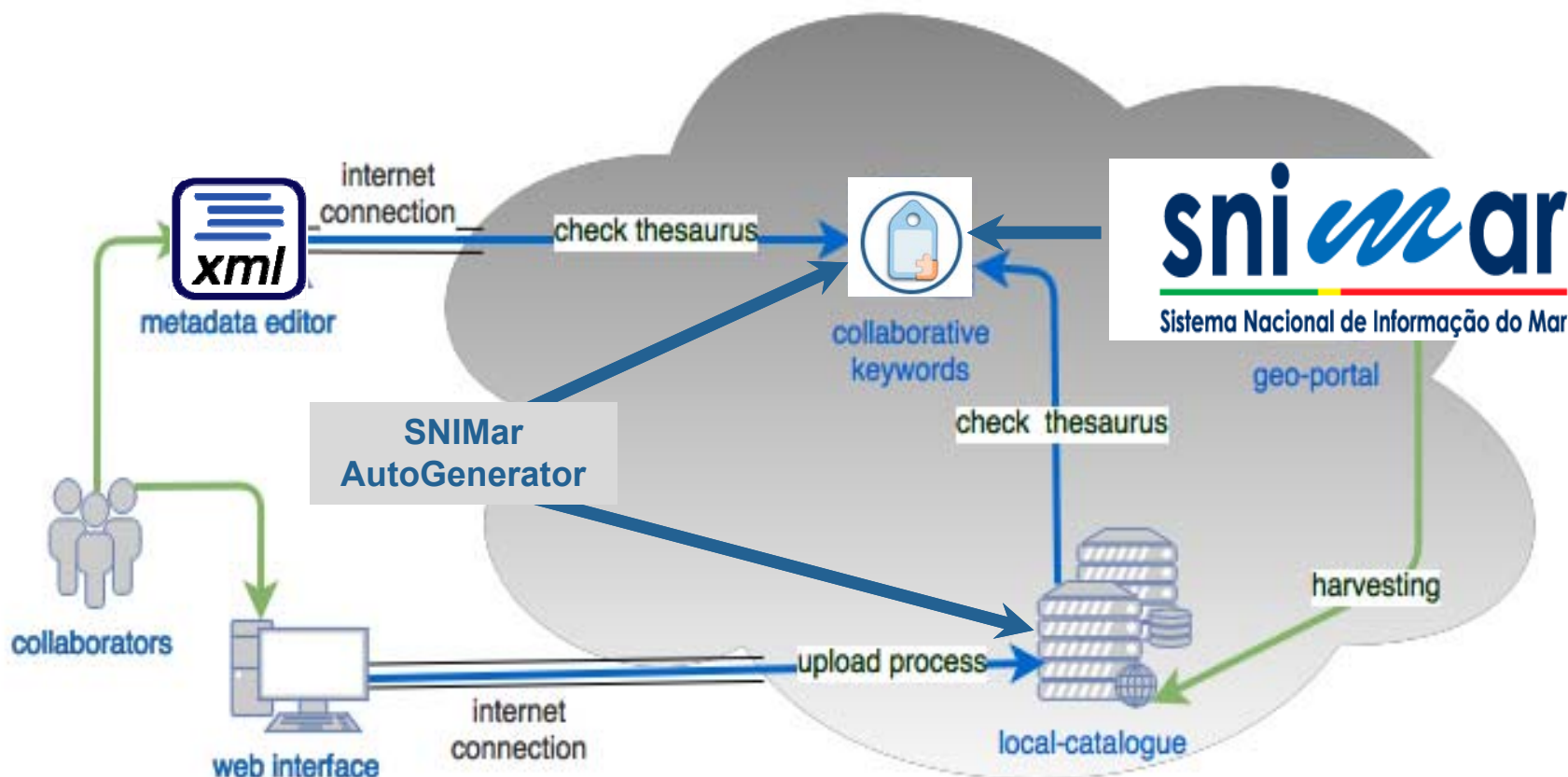
## Geoportal

### Open source *Esri Geoportal Server*

On going development

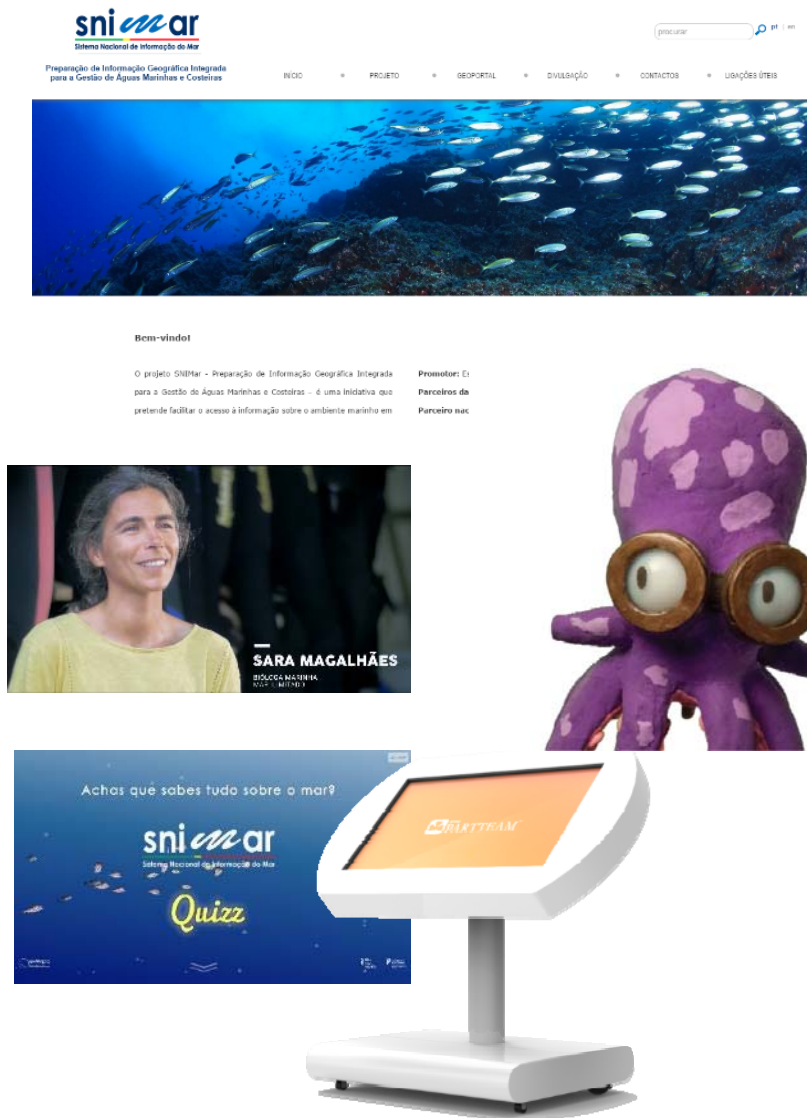
- Interface
- Harvesting
- Search (simple & advanced)





## Outreach

- Website – [www.snimar.pt](http://www.snimar.pt)
- Communication materials
- Educational materials:
  - Videos
  - Application “SNIMar Quiz”
- Project presentations





## SNIMar will be connected with national & international geoportals

1. Promote marine information sharing
2. Increase visibility of marine institutions and their data
3. Create opportunities for new partnerships in different thematic areas



## Public entities and citizens will benefit...

1. Quick access and easy search of existing marine information;
2. Answer to the questions:
  - What data on the marine environment exist?
  - Where are those data?
  - How can I access to the data?
3. Provide the display and/or download of free spacial data in from of images, vectores and tables.





# SNIMar:

A geoportal to share, search  
and access marine data

*Marine information at one's fingertips...*

Thank you !