

Serviços de Dados Geográficos

Danilo Furtado

Direção-Geral do Território

FCUL-IIG



GeoServer

Instalação

Geoserver

- Instalação

Packages



Platform Independent Binary

Operating system independent runnable binary.



Windows Installer

Installer for Windows platforms.



Web Archive

Web Archive (war) for servlet containers.

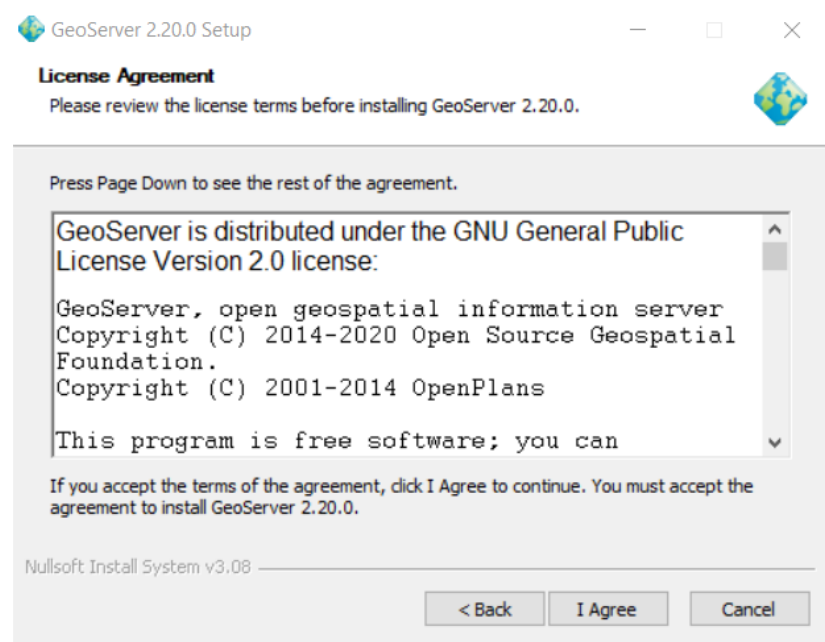
- Binary
- Windows installer
- War container

+ Java Runtime Environment (JRE)

- Última versão com Windows installer:
 - <http://geoserver.org/release/stable/>

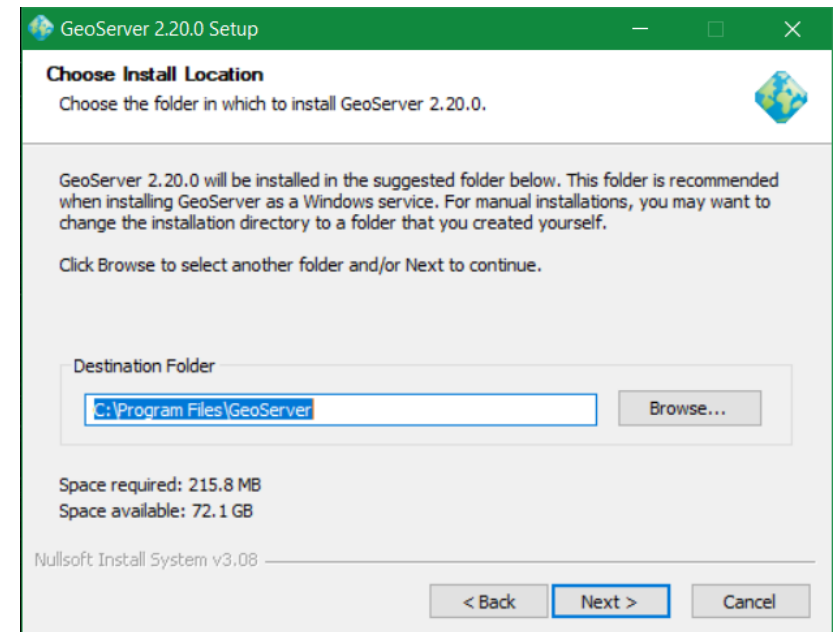
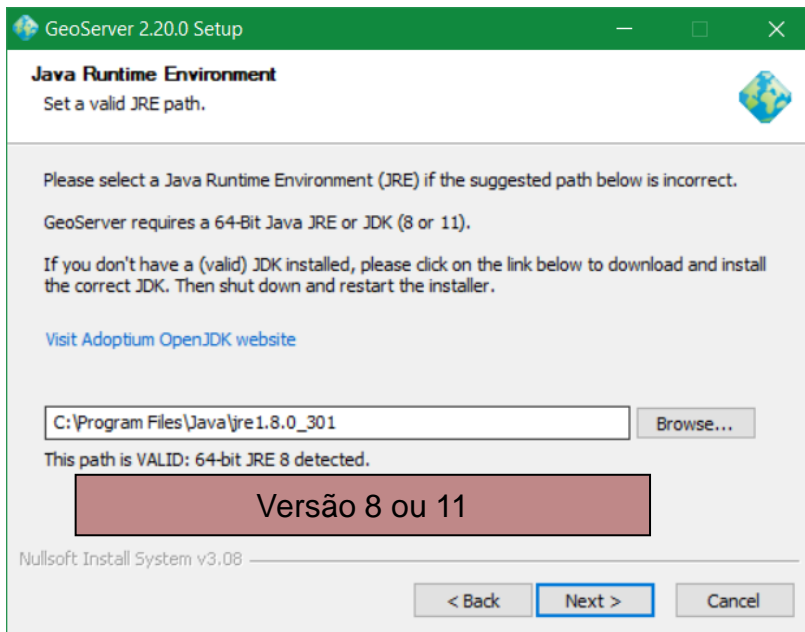
Geoserver

- Instalação em Windows
 - Executar o installer (.exe)



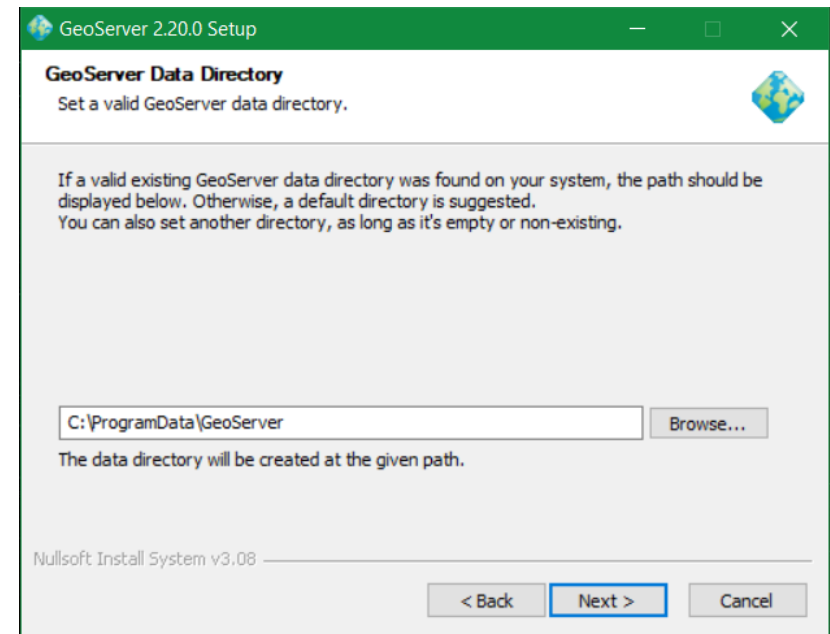
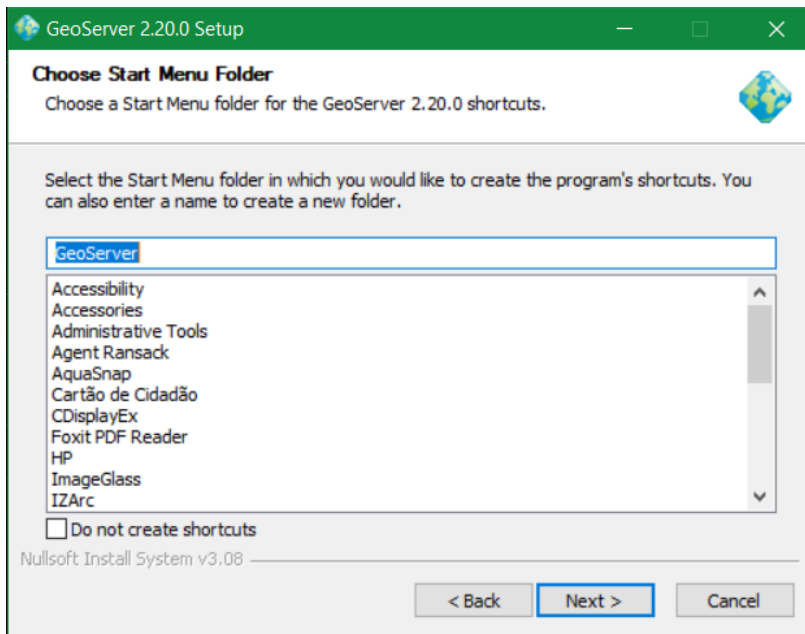
Geoserver

- Instalação em Windows



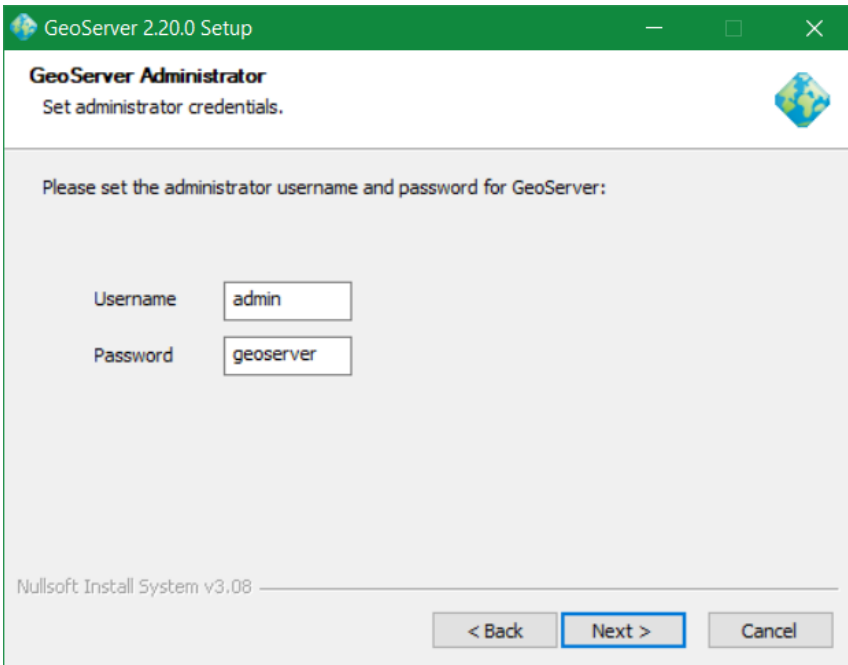
Geoserver

- Instalação em Windows



Geoserver

- Instalação em Windows



GeoServer 2.20.0 Setup

GeoServer Administrator
Set administrator credentials.

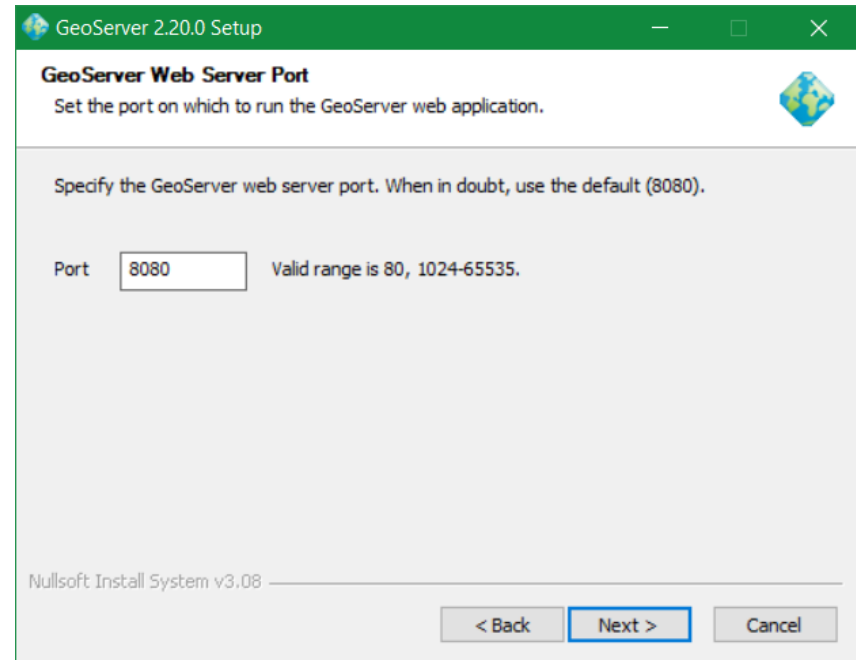
Please set the administrator username and password for GeoServer:

Username

Password

Nullsoft Install System v3.08

< Back **Next >** Cancel



GeoServer 2.20.0 Setup

GeoServer Web Server Port
Set the port on which to run the GeoServer web application.

Specify the GeoServer web server port. When in doubt, use the default (8080).

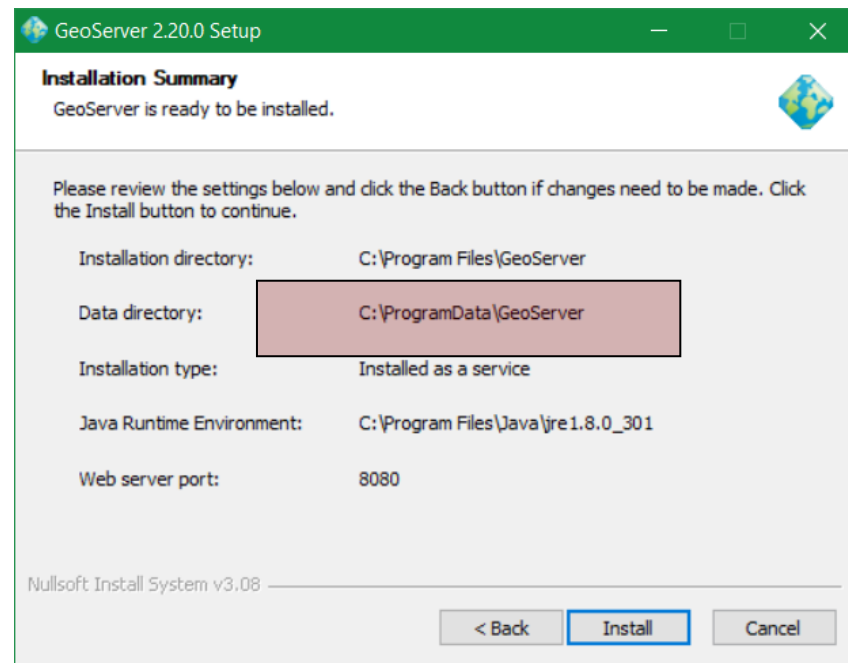
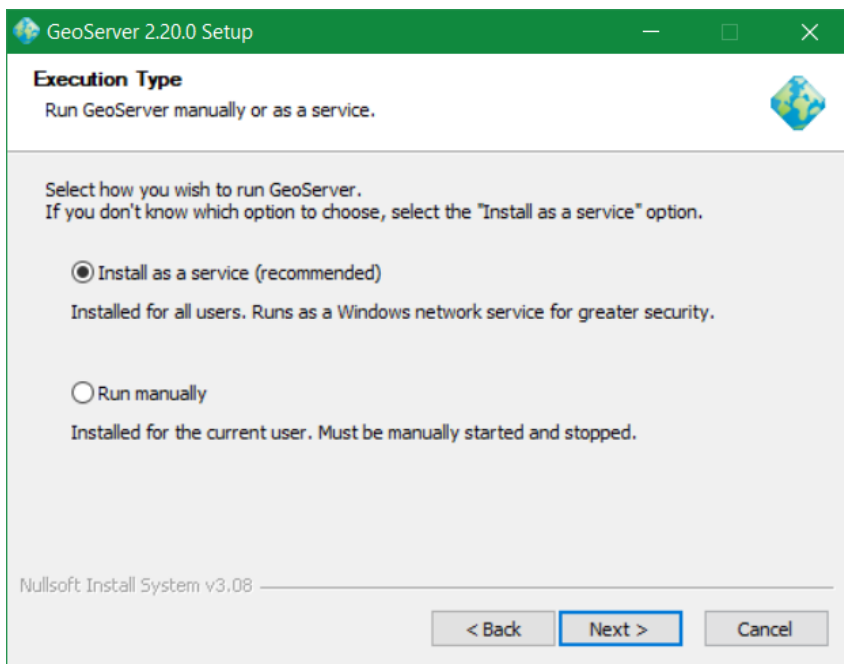
Port Valid range is 80, 1024-65535.

Nullsoft Install System v3.08

< Back **Next >** Cancel

Geoserver

- Instalação em Windows



GeoServer Data Directory

É onde serão armazenadas as **configurações** e os **dados** do GeoServer;

Ficam armazenados também os estilos (SLD), FeatureTypes que contêm as configurações das layers, e também as imagens georeferenciadas (ex.: Raster).

Geoserver

- Testar

<http://localhost:8080/geoserver/web/>

The screenshot shows the GeoServer web interface in a browser window. The browser's address bar displays `localhost:8080/geoserver/web/`. The page features a navigation menu on the left with sections for "About & Status", "Data", and "Demos". The main content area is titled "Welcome" and contains the following text:

Welcome

This GeoServer belongs to [The Ancient Geographers](#).

This GeoServer instance is running version **2.20.0**. For more information please contact the administrator.

On the right side, there is a "Service Capabilities" section listing the following services and their versions:

- WCS
 - 1.0.0
 - 1.1.0
 - 1.1.1
 - 1.1
 - 2.0.1
- WFS
 - 1.0.0
 - 1.1.0
 - 2.0.0
- WMS
 - 1.1.1
 - 1.3.0
- TMS
 - 1.0.0
- WMS-C
 - 1.1.1
- WMTS
 - 1.0.0

Geoserver

- Instalação em Windows

- Extensões

1. Download da extensão.

2. Extrair e copiar para

<GEOSERVER_ROOT>/WEB-INF/lib

C:\Program Files\GeoServer 2.10.1\webapps\geoserver\WEB-INF\lib

3. Restart do GeoServer.

Vector Formats

- App Schema
- ArcSDE
- DB2
- H2
- MySQL
- Oracle
- Pregeneralized Features
- SQL Server
- Teradata

Output Formats

- Excel
- Image Map
- OGR
- XSLT
- DXF
- JPEG Turbo

Miscellaneous

- Chart Symbolizer
- Control Flow
- Cross Layer Filtering
- CSS Styling
- GeoSearch
- CAS
- Monitor (Core, Hibernate)
- Importer (Core, BDB Backend)
- INSPIRE
- Printing

Coverage Formats

- GDAL
- Image Pyramid
- JPEG2K
- JDBC Image Mosaic

Services

- CSW
- WCS 2.0 EO
- WPS
- WPS Hazelcast