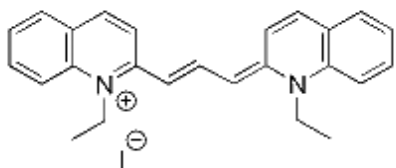
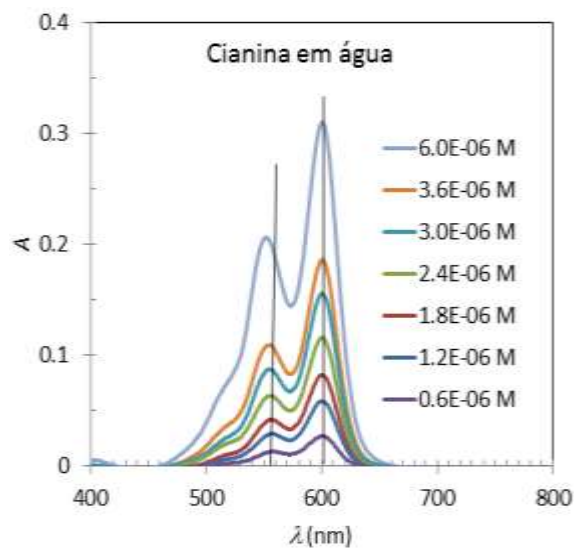


## T2 - Agregação em Corantes: Um Estudo Espectrofotométrico no UV-Vis

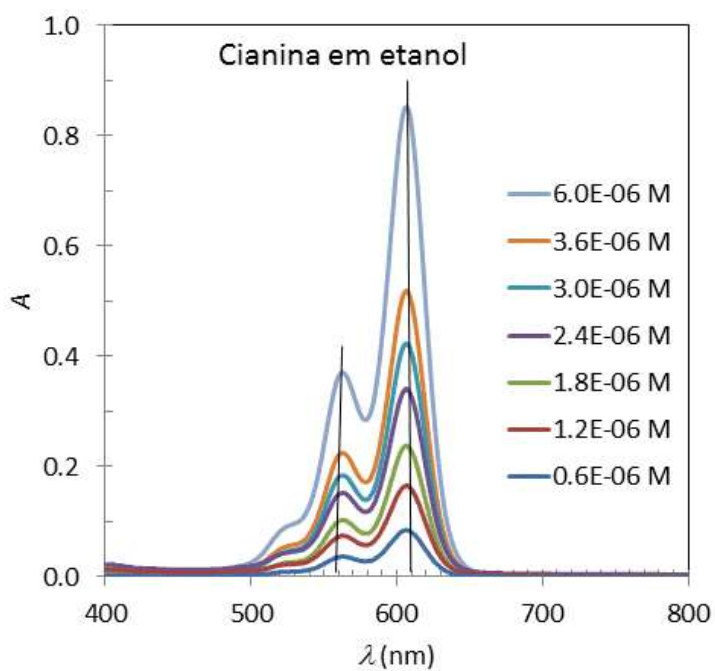


$C_T$  = concentração total da solução que inclui monómero e dímero



Em água

$C_T/\text{mol dm}^{-3}$	$A_{600 \text{ nm}}$	$A_{556 \text{ nm}}$
0	0	0
6.00E-07	0.027	0.013
1.20E-06	0.058	0.029
1.80E-06	0.082	0.042
2.40E-06	0.116	0.063
3.00E-06	0.156	0.087
3.60E-06	0.186	0.109
6.00E-06	0.310	0.201



Em etanol

$C_T/\text{mol dm}^{-3}$	$A_{606 \text{ nm}}$	$A_{563 \text{ nm}}$
0	0	0
6.00E-07	0.085	0.037
1.20E-06	0.165	0.075
1.80E-06	0.238	0.103
2.40E-06	0.341	0.152
3.00E-06	0.423	0.182
3.60E-06	0.518	0.225
6.00E-06	0.852	0.371