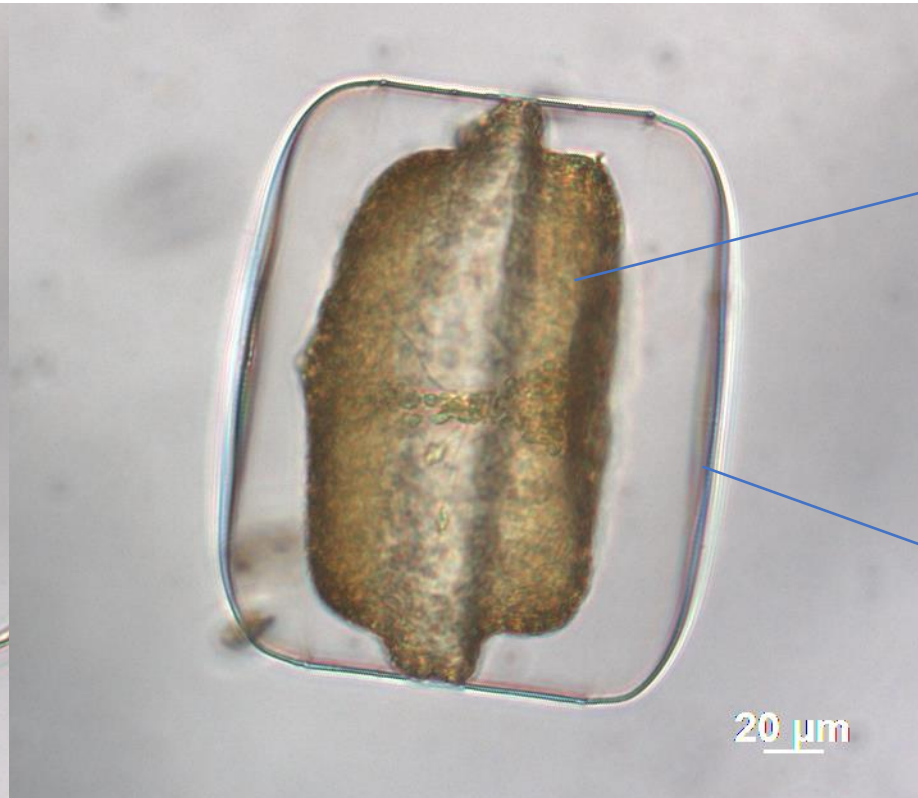


Diatomáceas

Diatomáceas cêntricas



vista valvar



vista conectiva

Coscinodiscus wailesii

Chaetoceros

sedas com cromatóforos

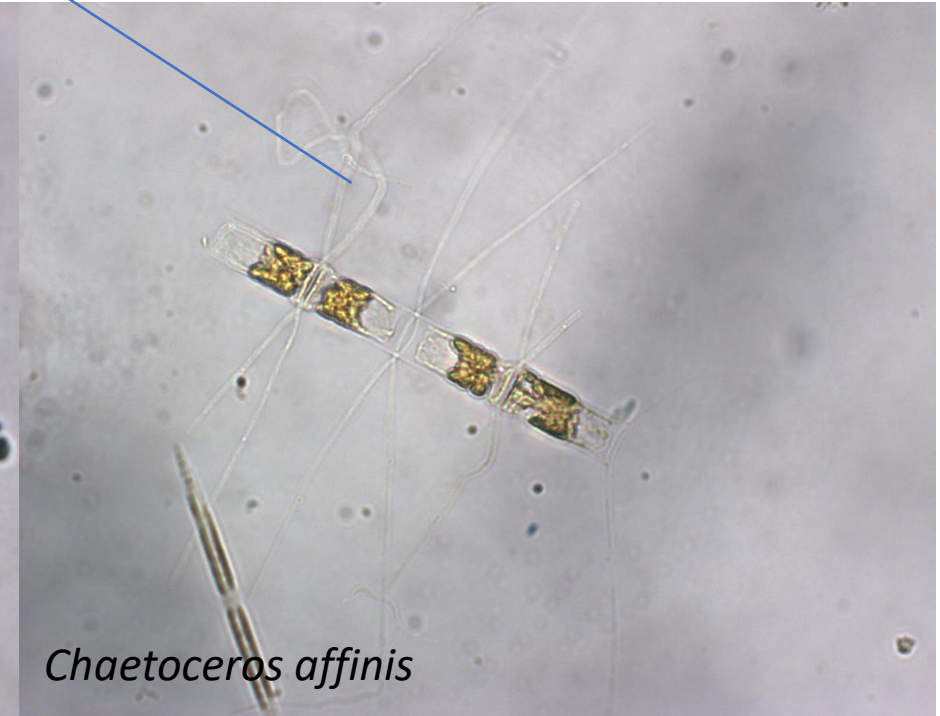


Chaetoceros densus

sedas sem cromatóforos

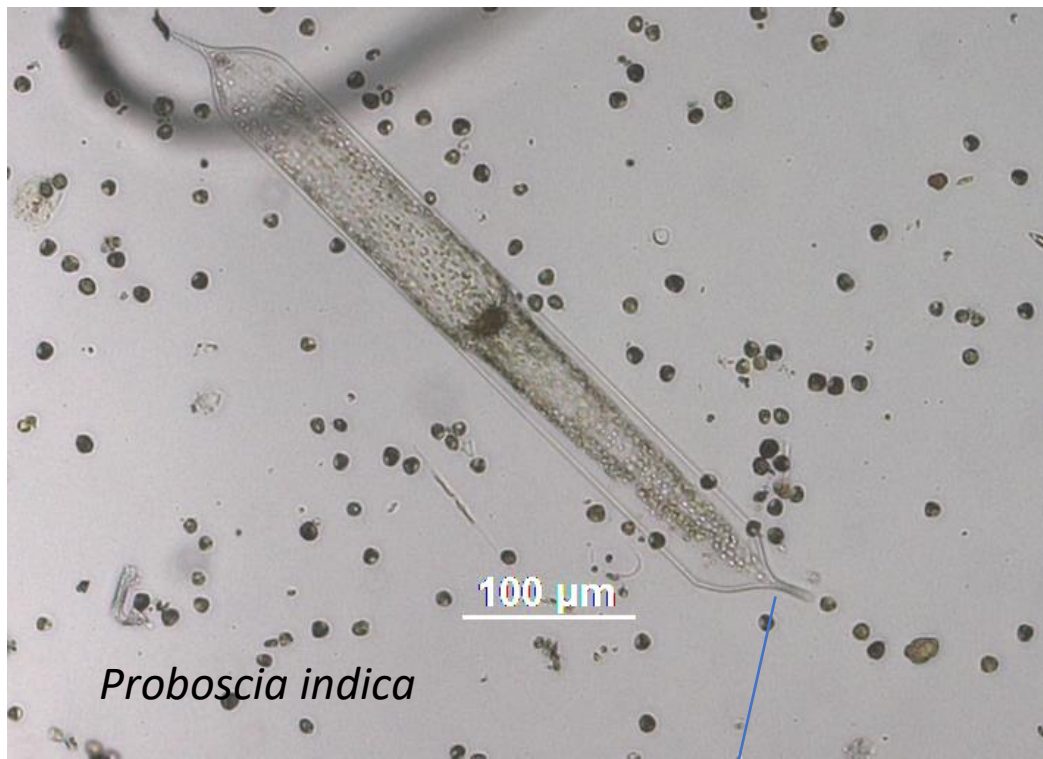


Chaetoceros curvisetus



Chaetoceros affinis

Proboscia



Proboscia indica

Probóscide truncada



Proboscia alata

Diatomáceas pinuladas

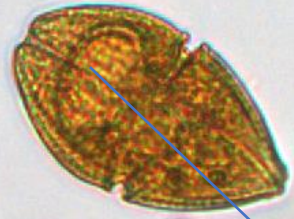


vista valvar



vista conectiva

Dinoflagelados nus



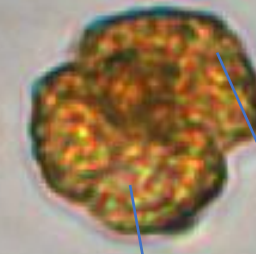
50 μm

Gymnodinium coeruleum



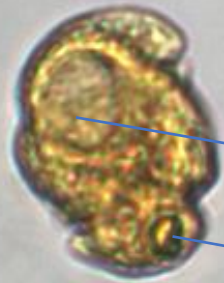
50 μm

Gymnodinium catenatum



20 μm

Karenia mikimotoi



10 μm

Cochlodinium sp

sulco

cíngulo

hiposoma

episoma

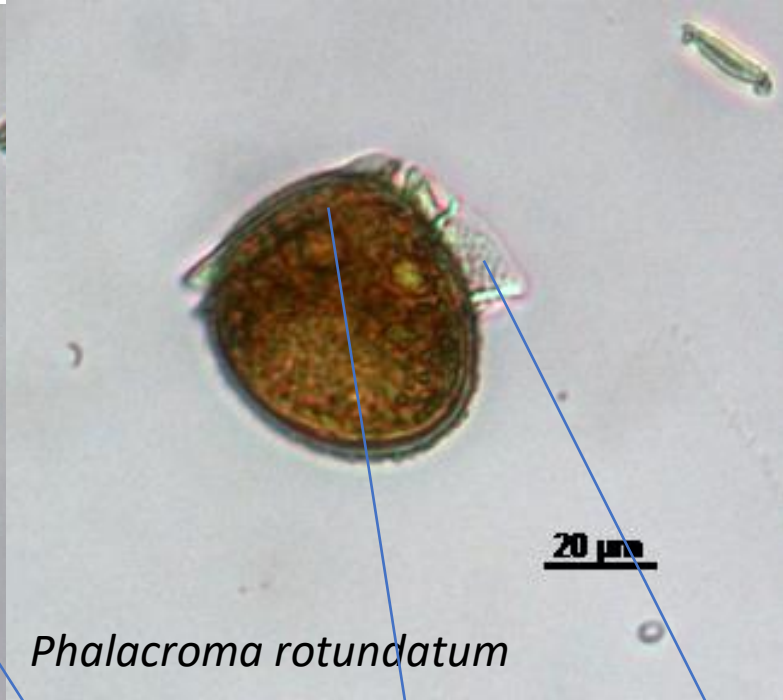
núcleo

ocelo

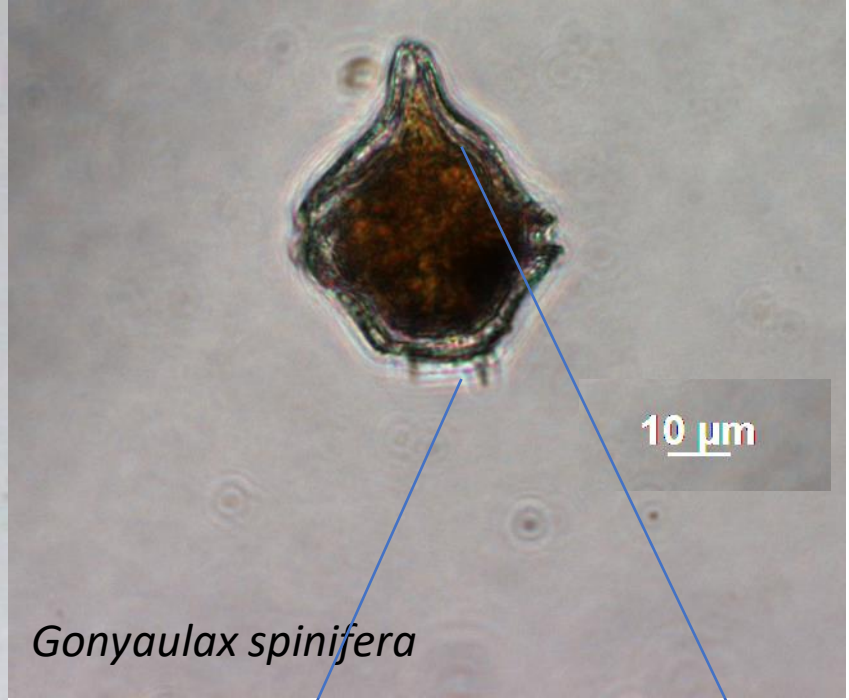
Dinoflagelados com teca



Protoceratium reticulatum



Phalacroma rotundatum



Gonyaulax spinifera



Scrippsiella trochoidea

ornamentação

cingulo

asa

espinho

epiteca

hipoteca

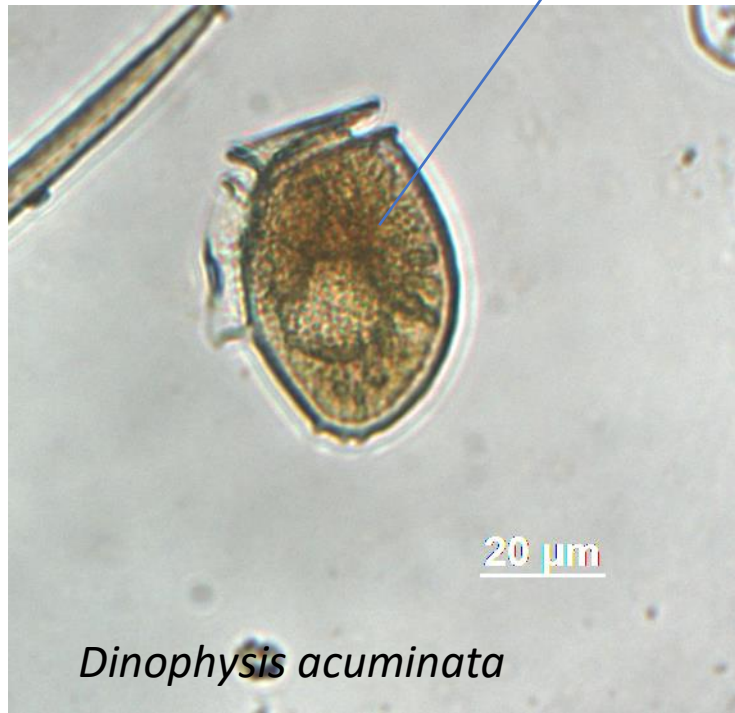
Prorocentrum



Dinophysis

hipoteca

epiteca

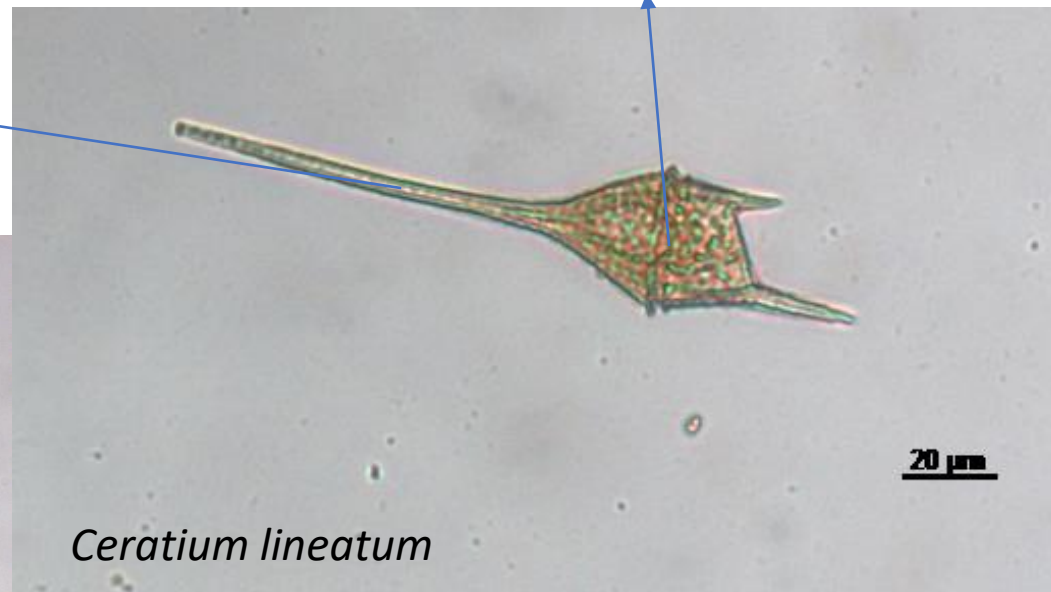


Ceratium

Prolongamentos antapicais

Prolongamento apical

cíngulo



Ceratium horridum

Ceratium lineatum

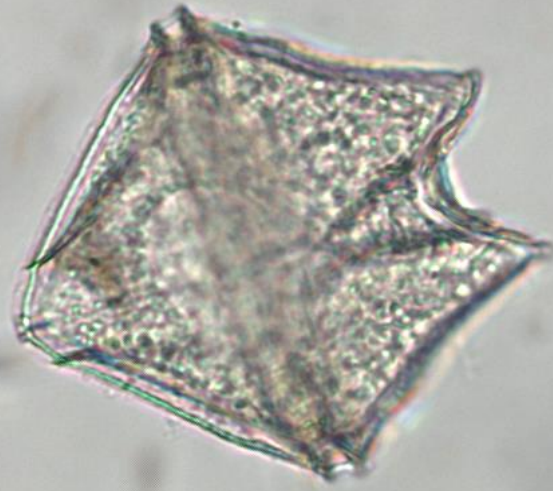
Ceratium fusus var seta

Protoperidinium



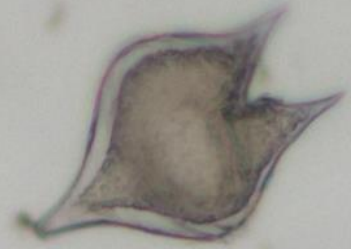
20 μ m

Protoperidinium globulus



20 μ m

Protoperidinium conicum



50 μ m

Protoperidinium oblongum



50 μ m

Protoperidinium depressum



50 μ m

Protoperidinium divergens



20 μ m

Protoperidinium pallidum



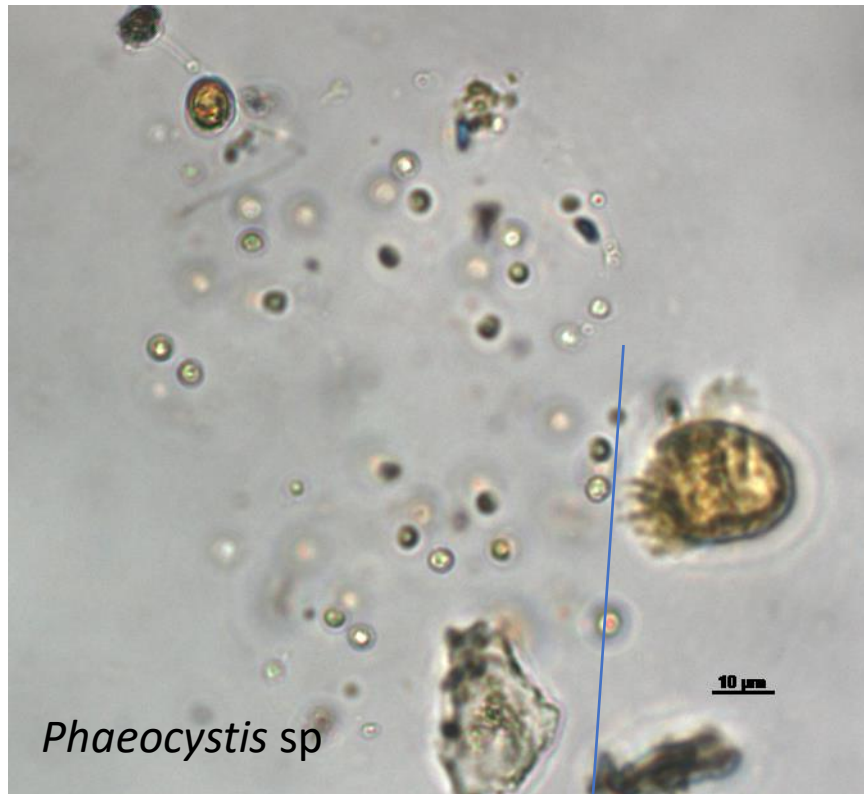
Noctiluca scintillans

tentáculo

200 µm

Outros grupos taxonómicos

Haptofíceas



bainha mucilaginosa

Prasinofíceas



Pterosperma cristatum

Euglenofíceas



flagelo

Eutreptiella cf. *eupharyngea*